



willowrail

Over one million kilometres of railway track spans the globe moving people, goods and bulk commodities. The management of these networks uses dozens of disparate tools. Owners and operators are faced with a sea of data, left to join the dots on their own and making critical decisions based on incomplete information. In an environment where even the smallest interruption can have serious social- and financial implications, there needs to be a better way - a way to access a complete view of a rail network, operating in real-time.

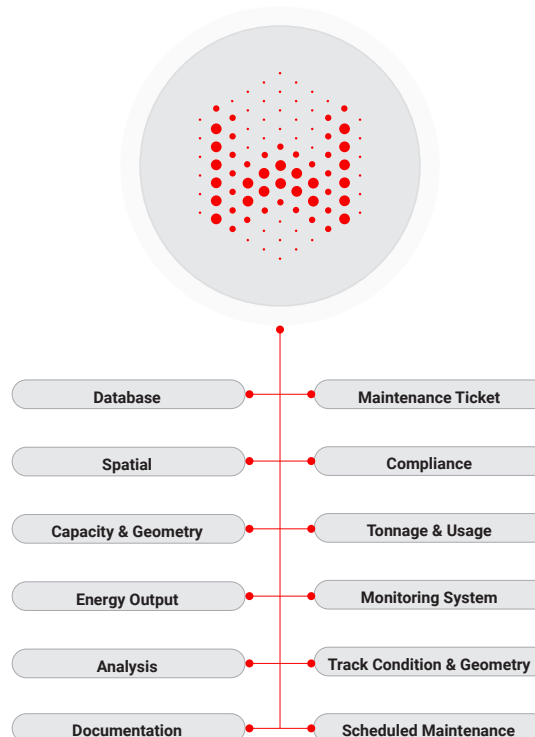
WILLOWRAIL - THE INTEGRATED RAIL ASSET MANAGEMENT SOLUTION

WillowRail is an innovative integrated rail asset management solution that integrates disparate rail systems into one data-driven solution for owners, operators, engineers and maintenance staff.

WillowRail combines operational data and asset management information into a simple and intuitive software platform.

By combining, organising and managing the static, spatial and live data for all rail assets, WillowRail creates a data-driven digital rail network. Rail owners and operators are empowered through advanced technology to maintain the highest availability standards across light, heavy and commuter rail networks.

A Single Interface
For Your Digital Rail Network



BENEFITS



Towards 100% Availability

The complementing combination of cutting-edge platform technology and the high level of rail industry knowledge increases network availability up to 99.9+%.



Efficient Maintenance

The WillowRail solution integrates asset condition monitoring data to detect and forecast failures This reduces reactive maintenance and the high associated costs by up to 20%. WillowRail's analytical engine enables the progression from preventative to predictive maintenance to optimise the lifespan of network assets.



Agnostic Ecosystem

In-house data and tools are converged to create a single, seamless and intuitive platform. No longer viewed in isolation, all assets are liberated to co-contribute to a dynamic, integrated network platform.

THE PLATFORM



Strukton
Rail



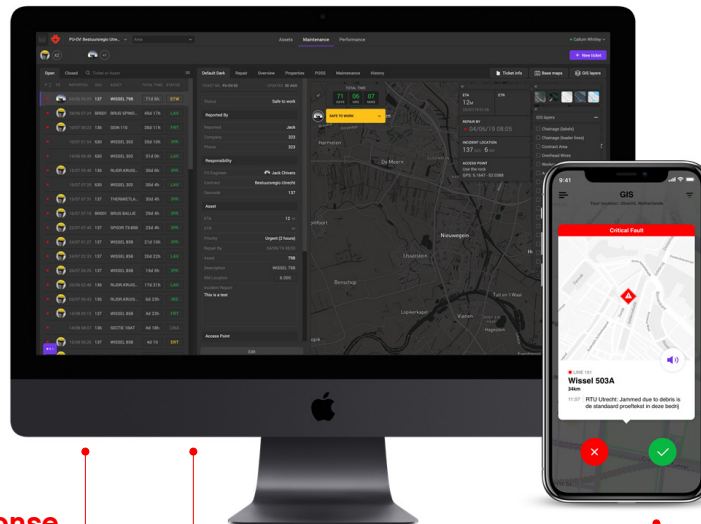
willow
know your world

A Single Interface

A single system drives deeper insights, proactive management and optimisation of rail networks. Clearly identify availability, punctuality, capacity, speed restrictions, interruptions and deviations all within a single interface.

Corrective Maintenance

Create, triage, assign, and track faults through their life cycle, decreasing total time to restore and improving visibility for all stakeholders.



Mobile Response

Maintenance staff are armed with the shared knowledge and history of assets in their Smart device. With its real-time functionality, the WillowRail app allows network owners and maintainers to view fault location, asset details, progress of repair and actions executed by maintenance staff all while having a direct line of communication, streamlining processes.

Predictive Maintenance

Utilising advanced algorithms and high-quality data, assets can be monitored without human intervention to predict faults before they occur.

Preventive Maintenance

Dynamic schedules allow maintenance to be performed on "as required" basis, driven directly by live data on asset health. This reduces fixed maintenance costs and provides operational flexibility in the maintenance of rail assets.

WillowRail is a joint venture between Willow and Strukton Rail formed in 2018.

Willow's innovative approach and technology expertise pairs with Strukton Rail's deep industry experience to form a successful partnership, delivering growth, providing clarity and ensuring progress within the rail industry. Together, Strukton Rail and Willow can offer an integrated solution to the rail market that combines asset management and maintenance, change management and a technology platform. This leads to substantial and effective transformation of rail organisations.

As a renowned technology company, Willow creates easy-to-use systems that optimise performance, enhance user experience and open new streams of revenue through data management expertise – turning data into real value.

Strukton Rail is a trusted partner to some of the largest rail networks in the world, delivering ground-breaking solutions across rail infrastructure. For over a century, Strukton Rail have been accumulating the vital industry knowledge and experience required to make WillowRail a reality.

WillowRail has offices in Utrecht, Sydney and Perth.

FIND OUT MORE

Talk to us about how we can help unlock your network's full potential today.

www.willowrail.com